

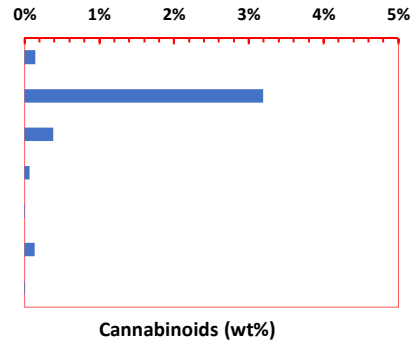


ILS Certification ID: 1415
 Client Sample ID: Integrated Hemp Solutions
 Sample Name: Batch# B190826H
 Matrix: CBD oil in grape seed Oil
 Received: 8/26/2019
 Test Date: 8/26/2019

Authorization: <i>Xuejun Sean Zhong, Ph.D.</i>	Date: 8/26/2019
---	--------------------

Cannabinoid Profile & Potency (LC-MS/MS CBX2.0)

Compound	mg/g	wt%
CBC	1.47	0.15%
CBD	31.98	3.20%
CBDA	3.90	0.39%
CBG	0.71	0.07%
CBN	0.09	0.01%
delta-9-THC	1.36	0.14%
THCA	0.05	0.01%
Total	39.56	3.96%
MaxTHC	1.41	0.14%
MaxCBD	35.40	3.54%



Ratio of Total CBD to THC = 25.14

Max THC = 0.877xTHCA + THC; Assuming full conversion of THCA to THC through decarboxylation after heating

Max CBD= 0.877xCBDA + CBD; Assuming full conversion of CBDA to CBD through decarboxylation after heating