

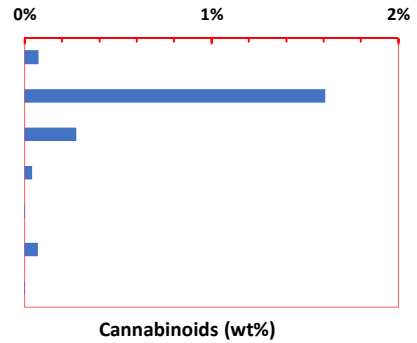


ILS Certification ID: 1368  
 Client Sample ID: Integrated Hemp Solutions  
 Sample Name: Batch# B190523M  
 Matrix: CBD oil in Grape Seed Oil  
 Received: 6/19/2019  
 Test Date: 6/19/2019

Authorization: <i>Xuejun Sean Zhong, Ph.D.</i>	Date: 6/20/2019
---	--------------------

Cannabinoid Profile & Potency (LC-MS/MS CBX2.0)

Compound	mg/g	wt%
CBC	0.76	0.08%
CBD	16.09	1.61%
CBDA	2.79	0.28%
CBG	0.41	0.04%
CBN	0.03	0.00%
delta-9-THC	0.72	0.07%
THCA	0.04	0.00%
Total	20.85	2.08%
<b>MaxTHC</b>	<b>0.76</b>	<b>0.08%</b>
<b>MaxCBD</b>	<b>18.54</b>	<b>1.85%</b>



Ratio of Total CBD to THC = 24.36

Max THC = 0.877xTHCA + THC; Assuming full conversion of THCA to THC through decarboxylation after heating

Max CBD= 0.877xCBDA + CBD; Assuming full conversion of CBDA to CBD through decarboxylation after heating