

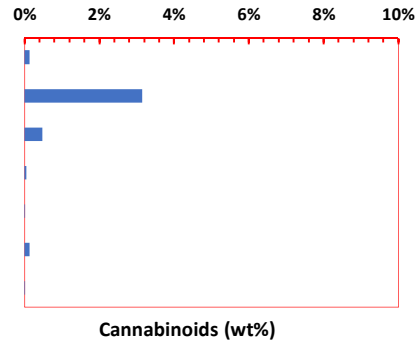


ILS Certification ID: 1362
 Client Sample ID: Integrated Hemp Solutions
 Sample Name: Formula 2-B190522H
 Matrix: CBD oil in Grape Seed Oil
 Received: 5/22/2019
 Test Date: 5/22/2019

Authorization: <i>Xuejun Sean Zhong, Ph.D.</i>	Date: 5/22/2019
---------------------------------------------------	--------------------

Cannabinoid Profile & Potency (LC-MS/MS CBX2.0)

Compound	mg/g	wt%
CBC	1.40	0.14%
CBD	31.47	3.15%
CBDA	4.81	0.48%
CBG	0.61	0.06%
CBN	0.07	0.01%
delta-9-THC	1.42	0.14%
THCA	0.02	0.00%
Total	39.80	3.98%
MaxTHC	1.44	0.14%
MaxCBD	35.69	3.57%



Ratio of Total CBD to THC = 24.74

Max THC = 0.877xTHCA + THC; Assuming full conversion of THCA to THC through decarboxylation after heating

Max CBD= 0.877xCBDA + CBD; Assuming full conversion of CBDA to CBD through decarboxylation after heating