

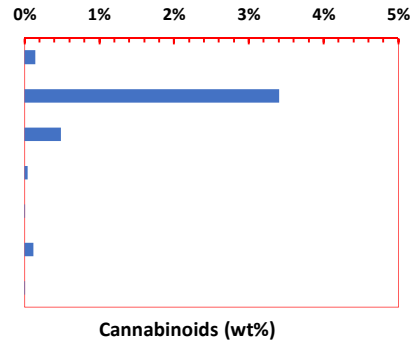


ILS Certification ID: 1356
 Client Sample ID: Integrated Hemp Solutions
 Sample Name: Batch B190508H
 Matrix: 1000mg CBD/oz in Grape Seed Oil
 Received: 5/8/2019
 Test Date: 5/8/2019

| | |
|---|-------------------|
| Authorization: <i>Xuejun Sean Zhong, Ph.D.</i> | Date: 5/9/2019 |
|---|-------------------|

Cannabinoid Profile & Potency (LC-MS/MS CBX2.0)

| Compound | mg/g | wt% |
|-------------|-------|-------|
| CBC | 1.44 | 0.14% |
| CBD | 34.08 | 3.41% |
| CBDA | 4.88 | 0.49% |
| CBG | 0.47 | 0.05% |
| CBN | 0.08 | 0.01% |
| delta-9-THC | 1.24 | 0.12% |
| THCA | 0.02 | 0.00% |
| Total | 42.21 | 4.22% |
| MaxTHC | 1.25 | 0.13% |
| MaxCBD | 38.36 | 3.84% |



Ratio of Total CBD to THC = 30.58

Max THC = 0.877xTHCA + THC; Assuming full conversion of THCA to THC through decarboxylation after heating

Max CBD= 0.877xCBDA + CBD; Assuming full conversion of CBDA to CBD through decarboxylation after heating